

A TYPICAL DAY IN A CONNECTED-OFFICE_

Surprise yourself with everything distributed-teams can do in practice

Everybody, Everywhere_In_

Flexible, Engaged, Measurable, Connected-Office

The phygital workplace (combining real and virtual environments) where talents meet, engage and evolve together, regardless of their location.

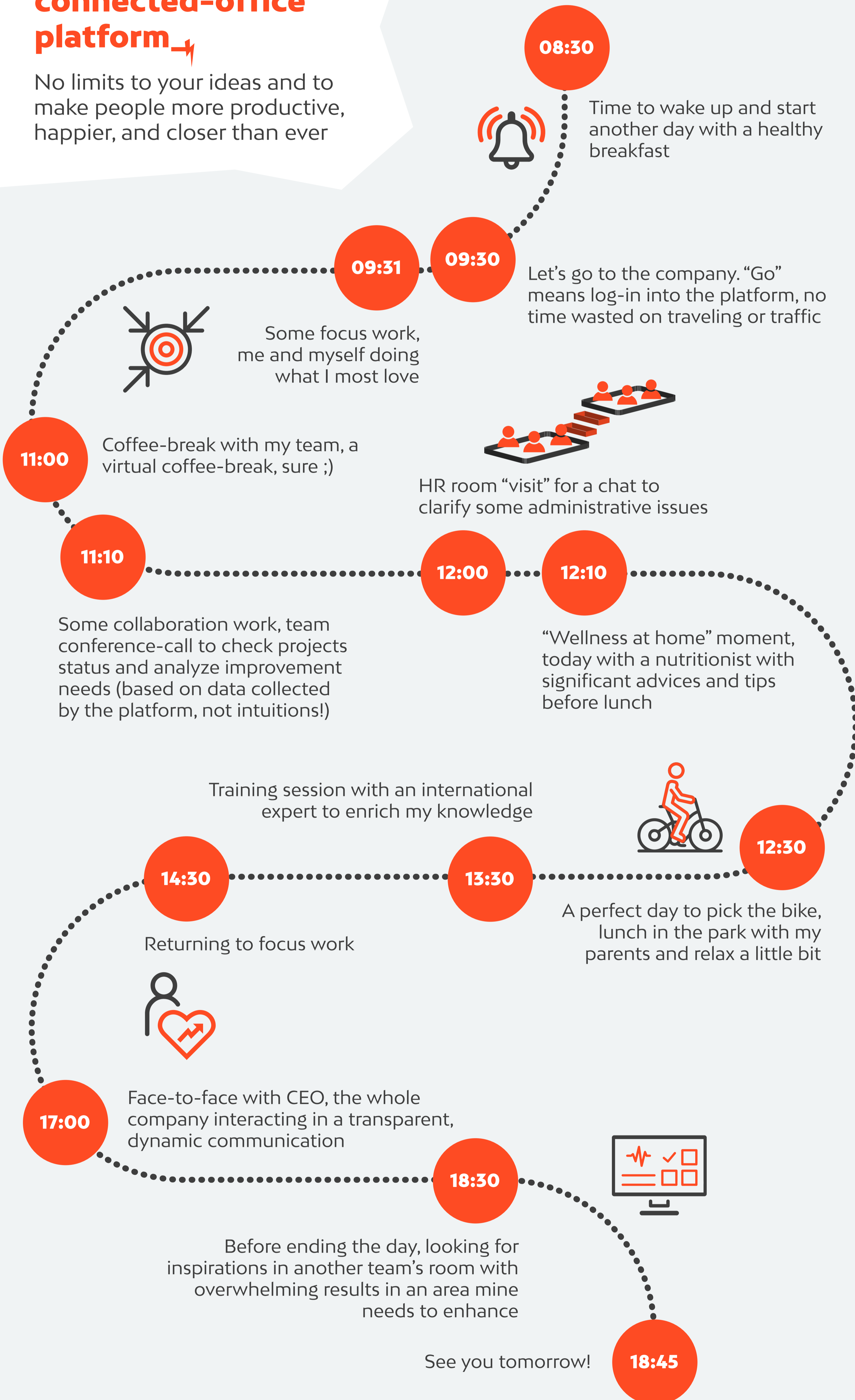
5 previous guidelines to improve the likelihood of success.

The connected-office platform should_

- 1_** Be combined with a revamped culture, new practices, equal for everyone
- 2_** Be used as the primary interaction channel (even for those who may be in a physical building)
- 3_** Provide metrics for continuous improvement, both individual and collective
- 4_** Support a posture of always taking care of people's well-being, not only as professionals
- 5_** Have the commitment and sponsorship of the whole organization, starting at the leadership

One day in a connected-office platform_

No limits to your ideas and to make people more productive, happier, and closer than ever



InStation is the connected-office platform, our super headquarters, that materializes, accelerates, and facilitates all this_

- Presence**
Being in the company is being at InStation. Each employee is accessible and part of an area or team. (Icon: Globe)
- Virtual spaces**
Digital representation of the company's building, its departments, rooms, teams, and people. (Icon: Floor plan)
- Video & Chat Communication**
Moments of collaboration, or focus, synchronizing agendas by chat. (Icon: Video call)
- Smart Dashboards as the foundation for Action**
Quick and detailed view of collective behavior, trends, and patterns. (Icon: Dashboard)

All company, all together. Get started today:

<https://instation.invillia.com>